



**DMI** 

Water & Ice

**120|10**

Enjoy 120 lbs. of Chewable Nugget Ice  
per day with a 10 lb. Ice Storage Bin

### Ice for Everyone

Our DMI model offers chewable nugget ice alongside filtered hot and ambient water in a cooler-sized format, so you can enjoy soft, chewable ice without having to install a clunky commercial ice machine.

### Designed with You in Mind

At Monet Water and Ice we believe that personal hydration products should reflect the people that use them, and the beauty, efficiency, and ease of use we all desire.

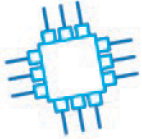
### A Better Way to Hydrate

Monet's bottleless dispensers provide greater hygiene and increased sustainability compared to bottled options. The latest filtration and LED UV technologies provide a continuous supply of clean fresh tasting water without the need for bulky 5-gallon or plastic single-use bottles.

# INTERNATIONAL H<sub>2</sub>O



**Effortless**  
Capacitive touch icons offer intuitive effortless dispensing.



**Advanced**  
Internal microprocessor controls and monitors system functions.



**Smart**  
LCD Smart screen displays messages, system status, and service alerts.



**Accommodating**  
Extra-large 12-inch dispense area makes refilling even the largest containers a breeze.



**Refreshing**  
Advanced reverse osmosis and multi-stage carbon filtration deliver a continuous supply of fresh, clean drinking water and ice.



**Clean**  
In-tank LED UV technology, anti-microbial surfaces, and no-touch filter changes keep the system clean inside and out.

**120**  
**10**

120 lbs. of Chewable Nugget Ice per day with 10 lbs. of Ice Storage.

**DMI**   
**Water & Ice**



Shown with optional 8.5" riser.